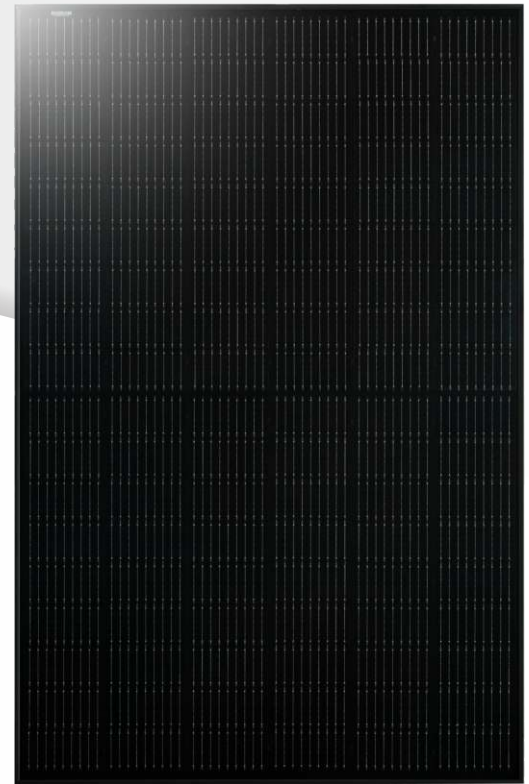
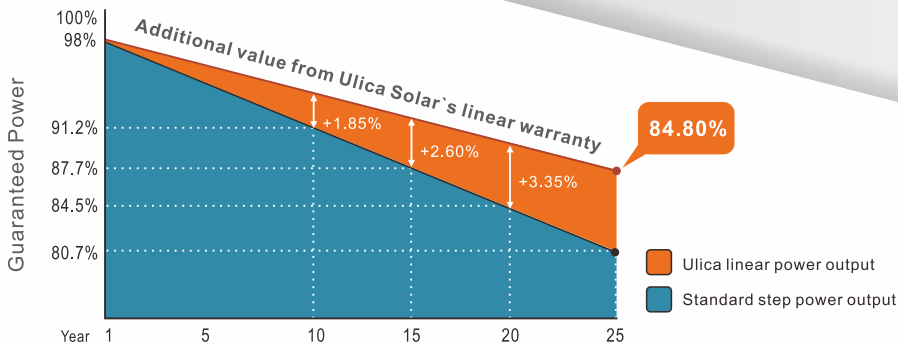


# MONO HALF-CUT MODULE

## UL-400 | 405 | 410M-108HV

### 405W-420W 1500V MBB 182mm cell



Global Tier 1 brand as announced by Bloomberg NEF



**Lower LCOE**  
Lower shading and resistive loss  
Lower temperature coefficient



**Outstanding mechanical load resistance**  
2400 Pa wind load, 5400 Pa snow load

**12** year product warranty



**Anti-PID (potential induced degradation)**  
Passed anti-PID test under 85% damp heat, 85% relative humidity for 96 hours

**25** year linear power warranty



**Great Durability against extreme conditions**  
Passed salt mist corrosion test, ammonia corrosion test, dust & sand test, fire test, all certified by TUV



**About Ulica Solar:** As member of Shanshan Group (stock code: 600884) which is TOP500 Enterprise in China, Ulica Solar is the leading manufacturer of solar cells and solar panels in China since 2005, and has been continuously listed as the Tier 1 PV Module Manufacturer from Q1 2020 by Bloomberg NEF, with the annual capacity of 1.2GW, and own investment projects of 300MW.

# MONO UL-400 | 405 | 410M-108HV



## ELECTRICAL PERFORMANCE

Electrical Parameters Standard Test Conditions

Module Type	UL-400M-108HV		UL-405M-108HV		UL-410M-108HV	
Power Output	P <sub>max</sub>	W	400	405	410	
Power Tolerance	ΔP <sub>max</sub>	W	0/+5W			
Module Efficiency	η <sub>m</sub>	%	20,48	21,74	21,0	
Voltage at P <sub>max</sub>	V <sub>m</sub>	V	31,2	31,3	31,4	
Current at P <sub>max</sub>	I <sub>m</sub>	A	12,82	12,94	13,06	
Open-Circuit Voltage	V <sub>oc</sub>	V	37,2	37,3	37,4	
Short-Circuit Current	I <sub>sc</sub>	A	13,57	13,69	13,81	

STC:1000w/m<sup>2</sup> irradiance,25C module temperature,AM1.5

## THERMAL CHARACTERISTICS

Nominal Operating Cell Temperature	NOCT	°C	43±2
Temperature Coefficient of P <sub>max</sub>	γ	%/°C	-0,360
Temperature Coefficient of Voc	β <sub>voc</sub>	%/°C	-0,290
Temperature Coefficient of I <sub>sc</sub>	α <sub>isc</sub>	%/°C	+0,049

## OPERATING CONDITIONS

Max.System Voltage	DC1500V
Max.Series Fuse Rating	25A
Operating Temperature Range	-40°C~85°C
Max static snow load	5400Pa
Max static wind load	2400Pa
Application Class	A

## CONSTRUCTION MATERIALS

Front Cover(material/type/thickness)	low-iron tempered glass/3.2mm
Cell(quantity/material/type/dimension)	108/monocrystalline/ 182X91mm
Encapsulant(material)	ethylene vinyl acetate(EVA)
Frame(material/anodization color)	anodized aluminum alloy/silver or black
Junction Box(protection degree)	IP68
Cable(length/cross-sectional area)	1100mm(or Customized Length)/4mm <sup>2</sup>
Plug Connector	MC4 Compatible/Original

## GENERAL CHARACTERISTICS

Dimension(L/W/H)	1722/1134/30mm
Weight	21.8kg

## PACKING CONFIGURATION

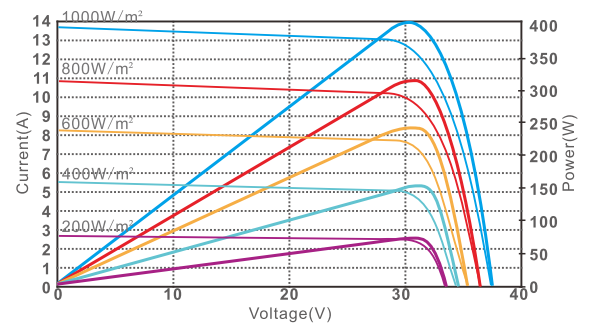
Pallet Size(L/W/H)	1762/1120/2550mm
Pallet Weight	1660kg
Pieces per Pallet	72pcs
Pieces per Container	936pcs

## INTERNATIONAL CERTIFICATES

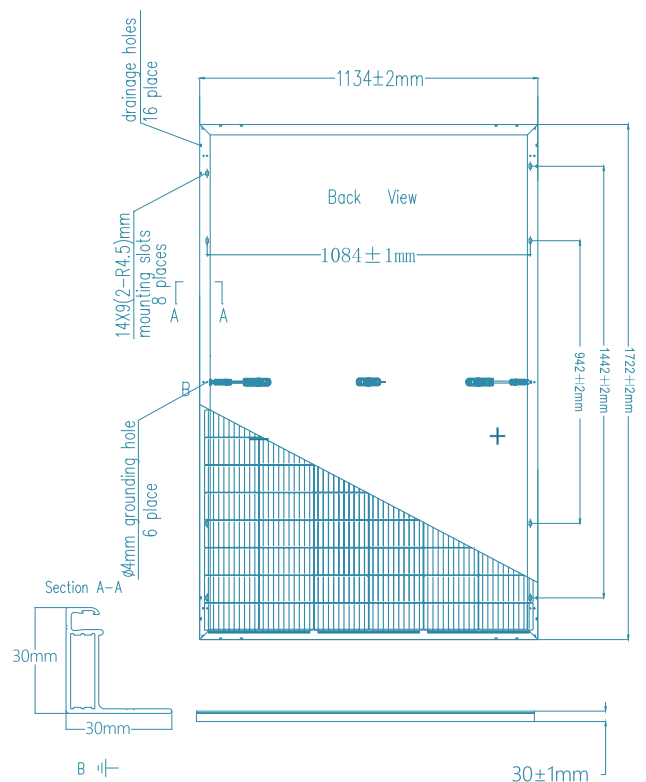
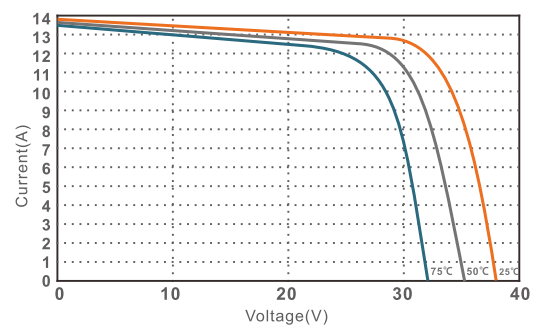
- IEC 61215, IEC 61730
- ISO 9001: 2015(Quality management systems)
- ISO 14001: 2015 (Environmental management systems)
- OHSAS 45001: 2018 (Occupational health and safety)

## I-V CURVE

I-V characteristics at different irradiances



I-V characteristics at different temperature



Please read the instruction entirely before handling, installing and operating Ulica Solar modules.

Due to continuous research and development, the specification is subject to change without prior notice.